

Thunder (L)

IMAGES



FINISHES

Evert

Martindale: 100,000
Fire Rating: BS5852 Crib 5
Weight: 250g/m2
Material: 100% Polyester



E112 YELLOW



E110 ORANGE



E091 DARK
ORANGE



E090 RED



E052 LIGHT
GREEN



E051 GREEN



E050 GREEN



E033 LIGHT
BLUE



E032 BLUE



E030 NAVY



E031 NAVY



E130 VIOLET



E070 BROWN



E074 COFFEE
BROWN



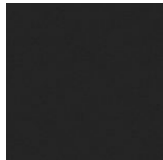
E080 LIGHT
BEIGE



E012 GREY



E010 GRAPHITE



E001 BLACK

Lotus PU

Martindale: 50,000
Fire Rating: EN1021 Part 1&2
Weight: 410g/m2
Material: 100% PU, backing – 50% Polyester, 50% Cotton



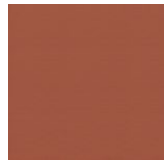
L022 WHITE



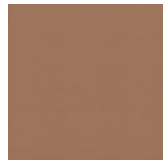
L111 YELLOW



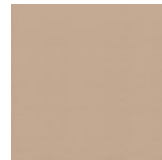
L110 ORANGE



L074 BROWN



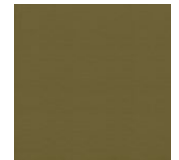
L080 BEIGE



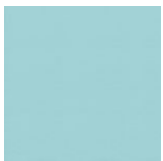
L087 IVORY



L051 GREEN



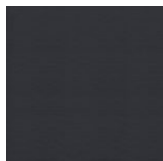
L052 OLIVE
GREEN



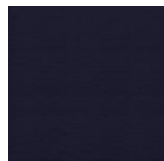
L033 LIGHT BLUE



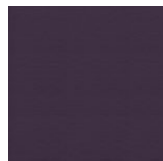
L032 BLUE



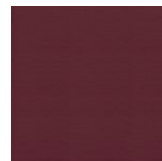
L031 NAVY



L030 NAVY



L130 VIOLET



L091 MAROON



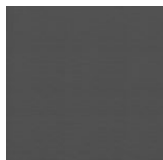
L090 RED



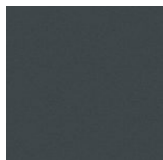
L084 COFFEE
BEIG



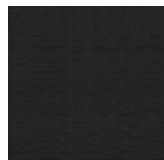
L070 BROWN



L011 GREY



E010 GRAPHITE



L001 BLACK

Camira Xtreme

Martindale: 100,000
Fire Rating: BS5852 Crib 5
Weight: 310g/m2
Material: 100% Polyester



Camira Blazer

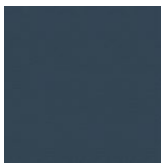
Martindale: 50,000
 Fire Rating: EN1021 Parts 1&2
 Weight: 460g/m2
 Material: 100% Virgin Wool



Leather

Martindale: 250,000
 Fire Rating: EN1021 Parts 1&2
 Thickness: 0,8-1,0 mm (+/- 15%)
 Material: Natural Leather





INDIGO



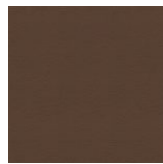
FLIEDER



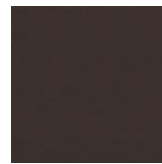
CURRY



PAPRIKA



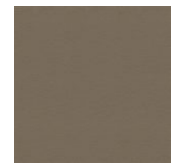
BISON



SUDAN



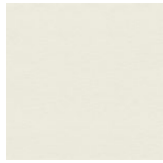
GOBI



MALZ



MANHATTAN



MILK



WHITE



SILBERGRAU



ELEFANT



CARBON



BLACK

CONFIGURATOR

Available variants:



Thunder Square Chrome Base Swivel
Armchair



Thunder Square Chrome Base Swivel
Foot Rest



Thunder Square Chrome Base Table