

# Jump

Jump desk mounted and freestanding screens provide a stylish and inexpensive solution to the division of your office space through their linkable design.

Jump screens are 35mm thick and utilise CMHR flame retardant foam.

The range features top contours that include straight, curved and wave options. Both Jump desk mounted and freestanding screens are available with an option of two, three or four way linking strips.

## IMAGES

---



# FINISHES

---

## Camira Cara

Fire Rating: BS476 Part 7, BS EN1021-1

Weight: 220g/m2

Material: 100% Polypropylene



AUSTEN EJ173



MAREE EJ195



PITLOCHRY  
EJ076



TUMMEL EJ038



STAFFA EJ 185



CARRON EJ015



DOLPHIN EJ105



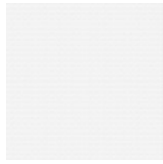
GALILEE EJ125



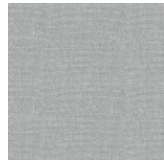
CLUANIE EJ180



WALTEN EJ011



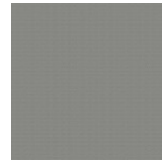
VIT EJ184



GLASS EJ004



CHAUCER EJ172



SHETLAND EJ191



BLACK EJ138

---

## Bradbury 66

Fire Rating: EN1021 Part 1, BS476 Part 7 Class 1

Weight: 225g/m2

Material: 100% Polypropylene



BISCUIT S119



RED S120



CLARET S151



SPRUCE S108



ENVY S106



SNOWDROP S111



POWDER S100



SEA BLUE S102



GALAXY S126



MOONSTONE  
S127



WALTHAM S123



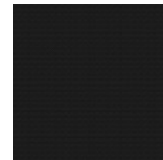
VIOLET S136



INCA S113



PHANTOM S112



BLACK S125

---

## Camira Lucia

Fire Rating: BS EN1021 Part 1&2, BS7176, BS476 Part 7, BS EN13501-1

Weight: 260g/m2

Material: 100% Recycled Polyester



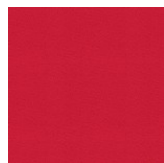
SANDSTORM  
YB302



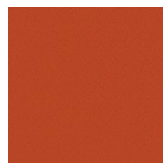
SOLANO YB072



TORTUGA YB168



BELIZE YB105



LOBSTER YB076



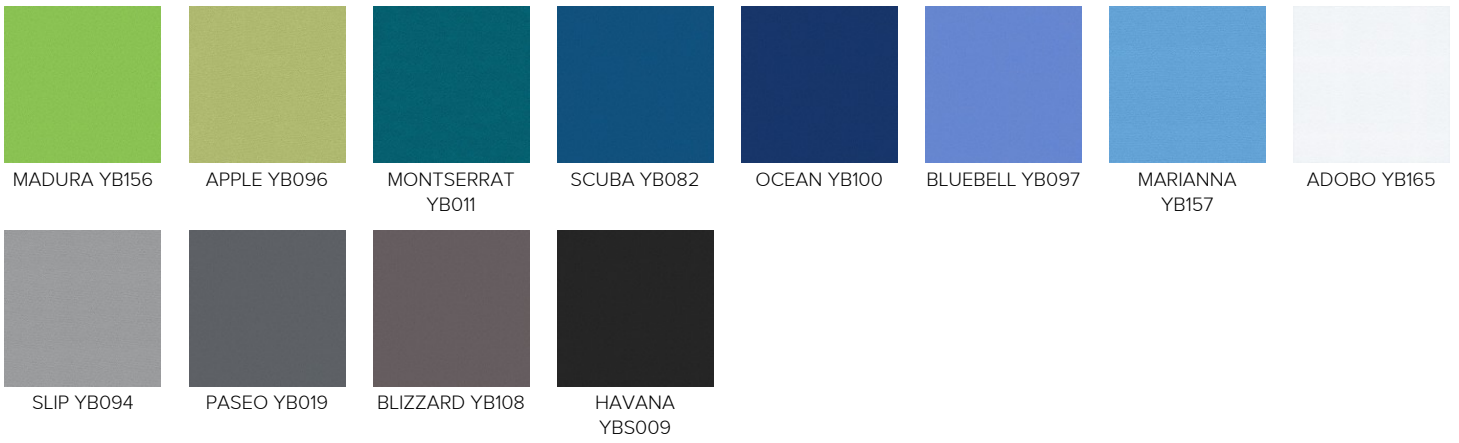
CALYPSO YB106



DIABLO YB101



TAROT YB090



## Bradbury Galaxy

Fire Rating: BS176 Part 7, BS EN1021 Parts 1&2, BS5852 Crib 5  
 Weight: 270g/m2  
 Material: 100% Polyester



## Camira L2

Fire Rating: BS476 Part 7, BS EN13501-1  
 Weight: 260g/m2  
 Material: 100% Polyester



## Camira Racer

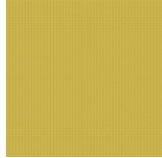
Fire Rating: BS476 Part 7, BS EN13501-1

Weight: 300g/m2

Material: 100% Polyester



PACE NU005



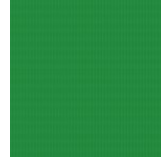
DASH NU048



ENERGY NU026



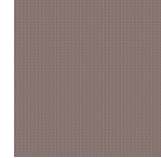
TRAIN NU027



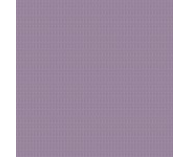
BOLT NU022



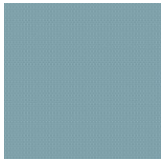
PLUNGE NU016



BATON NU003



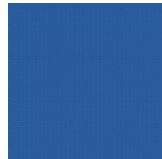
RIBBON NU047



NUTRITION  
NU039



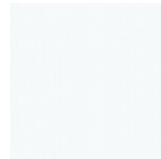
VICTORY NU037



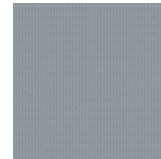
FOCUS NU037



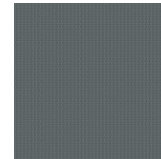
LINE NU033



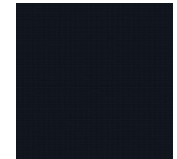
DART NU044



SILVER NU028



BLOCK NU029



CHASE NU004

## Camira Nexus

Martindale: 100,000

Fire Rating: BS476 Part 7, BS EN1021 Parts 1&2, BS7176, BS EN13501-1, UNI9175 Class 1 IM

Weight: 305g/m2

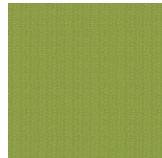
Material: 100% Polyester



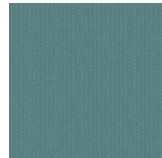
BERRY UNY04



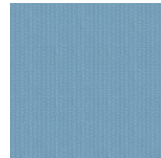
RUSSIAN UNY16



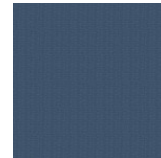
KIWI UNY05



PETROL UNY10



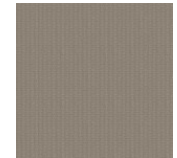
SKY UNY06



PACIFIC UNY03



OCEANIC UNY15



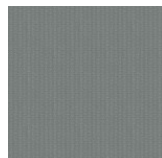
LIMESTONE  
UNY02



CHALK UNY12



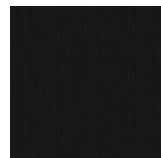
STORM UNY07



PEWTER UNY01



GRAPHITE UNY11



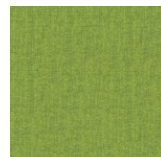
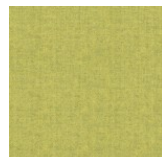
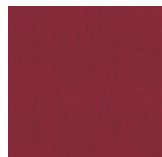
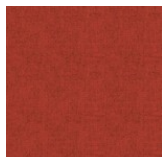
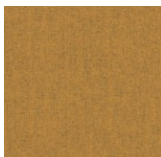
BLACK UNY13

## Camira Blazer Lite

Fire Rating: BS476 Part 6&7, BS EN13501-1

Weight: 355g/m2

Material: 100% Virgin Wool





**Note:** Batch to batch variations in shade may occur within commercial tolerances. Electronic colours in the electronic fabrics swatch may differ from real colours

CONFIGURATOR

Available variants:

